



Moremote In-Mold Monitoring System



Features

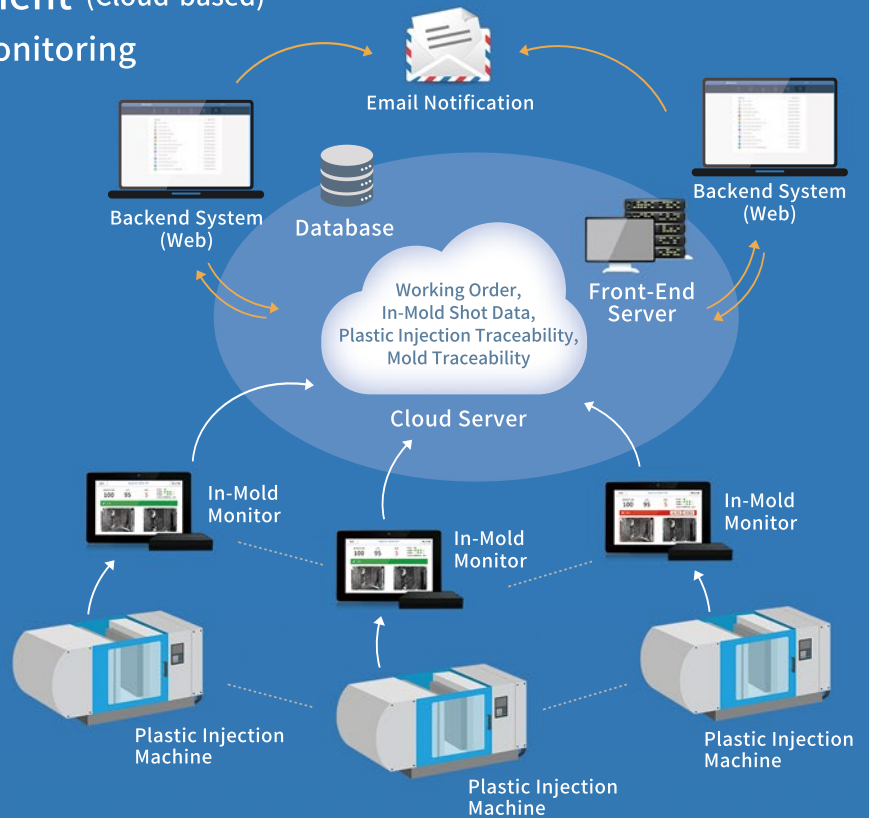
- Easy operation
- Easy selection of inspection area (supports up to 200 ROI)
- Automatic modification of inertia displacement
- Unique machine learning mode to avoid false alarm

Moremote's visual inspection system is designed to monitor mold condition with the help of easy-to-operate interface and sensitivity management of image recognition. It can effectively detect mold abnormalities and help reduce maintenance cost and labor. More significantly, the data of mold condition can synchronize with the cloud server for further analysis to enhance productivity.

Backend System Management (Cloud-based)

Big Data Analysis & Real-Time Monitoring

- Monitor the condition of plastic injection machine
- Analyze production data
- Manage mold traceability
- Push alert notification
- NG statistics



Compositions

| Product | Moremote In-Mold Monitor | | |
|----------------|--|--------------------|---------------------|
| | MR-0612 | MR-0850 | MR-1530 |
| I/O Box | MAX: 4 Input / 4 Output | | |
| Camera | 1280x1024 | | 2592x1944 |
| Lens | F: 6-12 mm C mount | F: 8-50 mm C mount | F: 15-30 mm C mount |
| Lamp | Industrial-grade IR lamp | | |
| Industrial PC | 10.1" LCD / Intel j1900 Quad core 2.0 GHz 4G RAM, 320G HDD | | |
| Mounting Stand | Magnetic Force: 60Kg *2 | | |

- [Note] 1. Standard accessories include Camera (x1), Lens (x1) and Lamp (x1).
Optional camera accessories are also available for various needs.
2. Working stand for IPC and I/O Box is optional. Cabinet for storage is included.
3. The above product specifications are subject to change without further notice.

高 瞻 資 訊
MOREMOTE



Tel: +886-2-77450670
Add: 2F, No. 240, Sec. 1, Neihu Rd.,
Neihu Dist., Taipei, Taiwan
www.moremote.com

Distributor / Reseller